



CERT & MRC: Partners in Public Health Response

Stephen Mansfield, RS, MPH

Ledge Light Health District

May 31, 2008

Objectives

- To demonstrate how CERT and the MRC can work together during an emergency
- To demonstrate how CERT members can be helpful with a Point of Dispensing
- Create a partnership between CERT and MRC efforts/training



Medical Reserve Corps Mission Statement

To improve the health and safety of communities across the country by organizing public health, medical, and other volunteers



Medical Reserve Corps (MRC)

- The MRC was founded in 2002 and is a partner program of Citizen Corps, the Corporation for National and Community Service, and the Peace Corps.
- MRC units are *community-based* and function as a way to *locally* organize and utilize volunteers who want to donate their time and expertise.

MRC Concept

- Establish groups of volunteers with an interest in strengthening the local public health emergency response
- Identify, credential, and prepare members
- Not necessarily an “emergency event”
(Sail Fest)

Who Volunteers?

- Non-medical individuals who want to volunteer
- Secretaries
- Engineers
- Chaplains
- Members of other volunteer organizations
- EMTs/Paramedics
- Licensed Practical Nurses
- Mental Health Professionals
- Physicians
- Public Health Workers
- Pharmacists

MRC Requirements

- Signed Acknowledgement and Waiver
- Completed Application
- Criminal Background Check
- Registration on MRC-TRAIN
- Incident Command System (ICS) 100 and 700 Training

Online Training

- MRC TRAIN is the premier learning resource for professionals who protect the public's health
- Offers access to online training
- Keeps a personal training record
- Can be integrated with CT Train
- www.mrc.train.org

CERT & MRC Similarities

- Operate under Citizen Corps
- Are designed to respond to community needs during emergencies
- Rely on trained volunteers
- Promote disaster preparedness
- Have liability coverage for volunteers during activation/deployment (Civil Preparedness Force)
- There is no prerequisites for volunteering, other than a desire to be trained and willingness to help

CERT & MRC Differences

CERT

- All hazards approach to preparedness
 - Fire, search and rescue
- 20 hours of basic training
- ICS 100 & 700 are *recommended*

MRC

- Prepared for medical emergencies & events
 - Pandemic Flu, Smallpox, mass gatherings
- 8 hours of basic training
- ICS 100 & 700 are *required*

Point of Dispensing (POD)

A POD is a place where a vaccine, antibiotic, or other medication is dispensed quickly to a large group of people.

When a POD is activated, there may not be a large-scale disaster that would warrant CERT deployment. The MRC would be activated if it is strictly an emergency of medical-nature.

Activation

If a public health emergency occurs, MRC volunteers will be:

- deployed by the local Director of Health or Emergency Management Director
- notified via phone, email, or fax (Voicereach®)
- given information regarding where and when their assistance is needed

Why would a POD be activated?

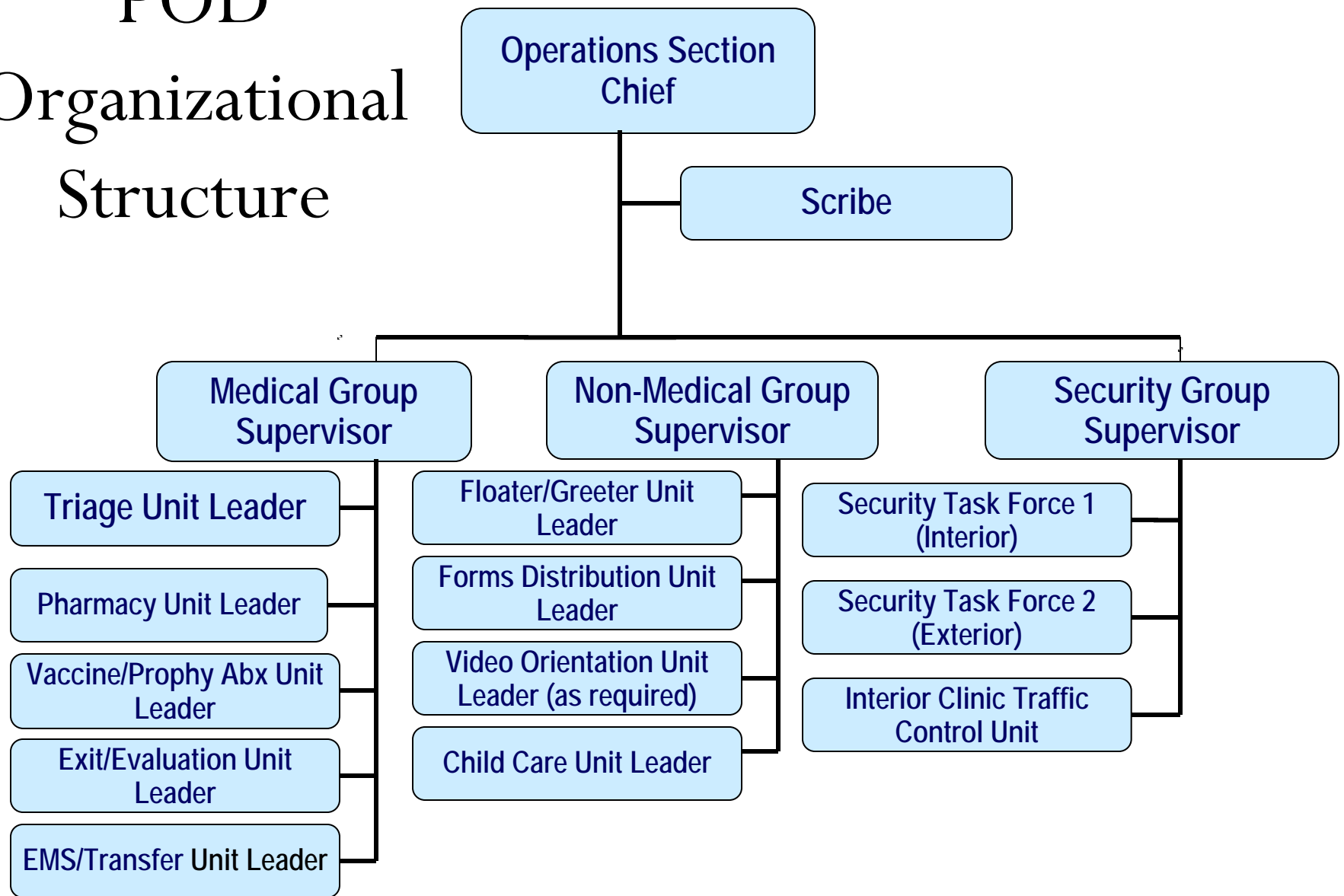
- To prevent disease in those exposed to an infection but who aren't sick yet
- To treat an infectious disease
- May be triggered by a natural disaster, influenza pandemic, or bioterrorism attack



Staffing

- It takes many people to run a POD, number of staff depends on the situation (April 19th Drill)
- Staff must represent many professions, disciplines, agencies, and backgrounds
- Sources of staff:
 - Public health and hospital staff members
 - Other first responders
 - Volunteers

POD Organizational Structure



Training

- As an MRC member, you would receive training before a disaster occurs
- “Just-In-Time” Training
 - This training is delivered at the time of an incident
 - Focused on providing knowledge needed to fill your role
 - May have a lack of staff in one area and have to shift volunteer efforts to compensate

Job Placement

- On your MRC application, you will share what your strengths are
- You will not be asked to perform a job that is not matched with your skills/interests
- If you would like training in a more specific area (ex. Disaster counseling), you can pursue this on MRC TRAIN where many different courses are available

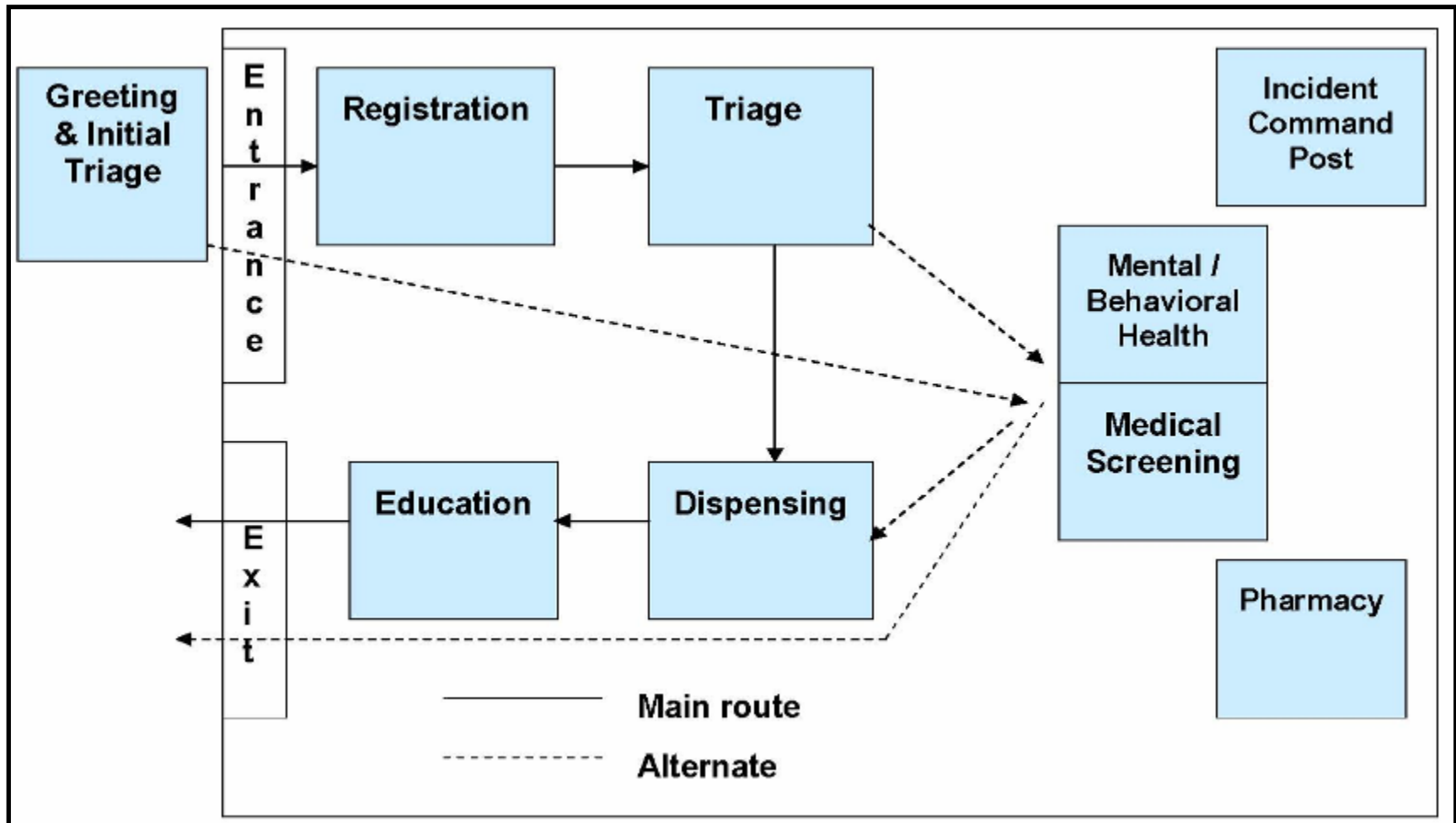
POD Job Descriptions

- Parking Assistants
 - Assist in directing the flow of traffic into a parking area
- Greeters
 - Direct attendees to proper entrance into facility
- IT Assistants
 - Assist with set up of computer equipment
- Form Distributors
 - Distribute consent forms, information packets, and pencils
- Registration
 - Basic data entry (demographics of attendees)

POD Job Descriptions

- “Shepherds”/ Guides
 - Provide directions to attendees
- Health Educator
 - Help develop and/or disseminate appropriate and necessary information
- Mental Health Counselors
 - Needed during all clinic operations to assist individuals
- Translators
 - Translate information for non-English speaking attendees
- Spiritual Leaders
 - Available to those in need of spiritual counseling

Example POD Floor Plan



MRC Volunteer Benefits

- Be able to expand your role as a volunteer to our community
- Receive bi-monthly newsletters
- Be notified of upcoming regional/statewide trainings
- Provided liability coverage for ALL MRC activities
- Have independent access to a multitude of training opportunities online

Interested in Joining the LLHD MRC??

- In your blue folders, you will find:
 - acknowledgement/waiver
 - criminal history authorization form
 - application
- Complete and return to Heather Kozlowski in the addressed envelope that was provided
- If you would like more information, please see the LLHD Resources/Contacts sheet in your folder
- Any questions, at any time, can be directed to Heather

Thank you for your time and commitment
to your community!

